

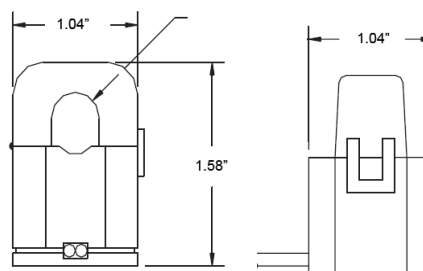


CT-CR3110-3000 Current Transformer Specification

This document is intended to be used with the Packet Power 3-Phase Power Monitoring Module User's Manual. Please refer to it for important information.

Technical Specifications

CT Type: Split Core
Rated Input: 0-75 Amps AC (nominal)
Max. (Load): 106 A
Inside Diameter: 0.4"
Dimensions (mm): 1.04" x 1.58" x 1.04"
Accuracy: +/- 1.0%
Leads: 22 AWG
Lead Length: 6"
Vector Indication: arrow on bottom points toward the load



Installation Notes

Polarity: (see figure 2)

- Black wire to negative (-) terminal
- White to positive (+) terminal



To install the CT on the conductor cable:

- Attach the CT leads to the monitoring module while the module is not powered.
- Power down the circuit prior to installation if possible.
- Only qualified personnel should install CTs on live circuits. If the CT is installed on a live circuit, it must be connected to the monitoring module or the leads must be shorted to avoid damaging the CT.
- Open the split core CT by opening the latch on the side of the CT.
- Position the CT on the conductor such that the arrow on the bottom points toward the load. Close the CT and ensure the latch has clicked into place.

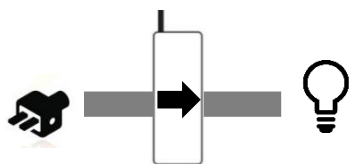


Figure 1: CT Orientation

A PHASE			B PHASE			C PHASE		
(+)	IA	(-)	(+)	IB	(-)	(+)	IC	(-)

Figure 2: Wire color polarity